



A jubilant George Thomas waves high the 1959-60 "Pembrokeshire Knock-out Cup".

Llangwm, the only village side in Pembrokeshire, is a club steeped with tradition; the unique character of the village and its close association with the game over the years having made it one of the best known clubs in Eest Wales. But as well as its long traditions, it is a club eager to keep pace with the times, and this month sees another page in the Llangwm history book completed with the opening of a new Stand and changing quarters. Constructed at a cost of £13,000, it is a striking development of which members of the club can feel justly proud.

Although its name reflects the image of a quiet, Welsh-speaking village, Llangwm is in fact very much part of Pembrokeshire's English-only speaking population. However, their rugby traditions go as deep as anywhere else in Wales, and to this tightly-knit community the game is almost a religion—even the women speak as knowledgeably as the men!

THE TURN OF THE CENTURY

As far as one can gather rugby started in Llangwm in 1901, two teams were mustered from different parts of the village, called Llangwm Swifts and

THE SMALL CLUB WITH THE BIG K.O. PUNCH

THE STORY OF
LLANGWM R.F.C.

By

A. H. PHILLIPS

Llangwm Wanderers. Many tough and exciting battles were fought out between the opposing men of the village, but eventually they decided to amalgamate to form the present Llangwm Club.

Two brothers who figured prominently in these early games were the brothers Jimmy and Jack Stephens, while old players who did much to keep the Club running as members of the committee, included Alfred Bryant, Johnny Morgans, Ned Morgans, who was also a well-known W.R.U. referee, George Owen, Ald. James John, father of the present local W.R.U. member, Mr. Osmonde John, O.B.E., Tom Palmer, his brother Edwin Palmer, the brothers Robert and George Jones, Ernie Jones, Sidney Morgan, George John and Willie Bryant, who held the Secretaryship and is the present President of the Club. Apart from Ned Morgan, Llangwm at that time boasted two other notable Union referees in the brothers, Dick and Willie Jones.

In 1908-09 the team had its first real success when they won the Pembroke Dock Easter Tournament. But after this the club went through a difficult period and at one time disbanded.

MEMORABLE PUNCH-UP

It was reformed just before the First World War, and although they failed to collect any silverware, there were many keen battles fought in the Pembrokeshire Knock-Out Cup. There was one famous match against Pembroke when Llangwm's fine Australian forward Joe Bell was involved in a 'punch up' with Pembroke's Dick Hubbard. This sparked off a 'free for all' and resulted in referee Bill Jolley of Neyland abandoning the game. This was re-played on the Llanion Barracks ground and saw Llangwm winning 13-8 with one of their finest players of this time, Billy George Morgan scoring a try, one dropped goal and a penalty.

HILLMAN

HUMBER

SUNBEAM

COMMER

RENAULT

SALES AND SERVICE

NICHOLAS' GARAGE (Haverfordwest) Ltd.

1968 SELF-DRIVE HIRE CARS
AVAILABLE

Including Current Rootes Models and
COMMER MOTORIZED CARAVAN

Telephone:
HAVERFORDWEST 2074

JAMES WILLIAMS (NARBERTH) LTD.

SOLE SUPPLIERS OF

**BEERS
WINES
SPIRITS**

To the
**LLANGWM
RUGBY CLUB**

Extend congratulations and good wishes to
the club on the opening of their new Stand.

MARKET SQUARE, NARBERTH

After the end of the First World War, the club recommenced playing and in the seasons that followed a fine young side emerged. In 1922-23 the team finished runners-up in the West of Llanelli Rugby League competition and then in the following season achieved their first Championship success in the same League. Captain of this side was Willie Palmer, a sound player with his brother Victor as a splendid stand-off half. Another star was Wynford 'Ginger' Palmer, a brilliant wing-forward, who was a terror to opposing outside-halves.

He was the man of the match when Llangwm entertained mighty Llanelli in the same season. The Scarlets included in their side international half-backs Arthur John and Dai John, and forwards Gethin Thomas and Claude Ellery, who later went North, but they were given a terrific game and only won by the narrow margin of 8-3.

DISBANDED AGAIN

In 1925-26 the team under the captaincy of Alec Morris won their second League Championship, but then came a slump and little success was achieved for some time. The team disbanded at the outset of the Second World War, but was again reformed at the end of hostilities.

In 1948-49 the team gained its first post-War success when they won the Pembrokeshire Knock-Out Cup with Meurig Hughes (captain), Brindley Gettings, Johnny Hayes and hooker Ron Fuller starring in a well balanced side. The former was one of the finest players the club has had and during a great career spanning twenty years turned out at full-back, centre, outside-half and in the pack. Meurig is the present Vice-Chairman of the Club and is also a well-known W.R.U. referee.

Another first-class player was Johnny Hayes, a wonderful outside-half who could be described as the man who taught Llangwm to handle the ball. He teamed up with scrum-half Brindley Gettings and this happy partnership brought Llangwm many honours. Fuller was one of the best hookers to don the 'Wasps' black and amber shirt and was sought after by Northern Union agents, being offered a trial with Batley.

ENJOY A CONGENIAL EVENING WITH
A TRULY WELSH FLAVOUR AND THE
BEST OF BEERS AND LIQUORS

Visit

THE IRON DUKE

(Prop.: E. Bonnell)

CLYNDERWEN

Tel.:
221

'CROESO CYNNES I BAWB'



Happy smiles from the winning team and officials after K.O. Final.

BISHOP CUP RECORD

The season rolled on until 1958-59 when a young side emerged, skippered by Dillwyn Lewis, another outstanding Wasps player, and they took on all-comers to win the League Championship, the Pembrokeshire Knock-Out Cup, the Junior Union Knock-Out Cup (under second team skipper Bernie Saies), and also the Bishop Cup. Llangwm hold the record number of wins for this cup, presented by the late Mr. Jack Bishop to be played for annually between the club and great rivals, Haverfordwest.

The Club repeated the same cup-winning feat in the next season, captained by another fine scrum-half George Thomas, who is still playing as well as ever, and again in 1961-62 when the team was led by their splendid hooker, Brian John, one of the great characters of the local game. The Second Fifteens were skippered on these occasions by Mel Scale and Ted Sinnett.

TWO OUTSTANDING PRODUCTS

The Club has in recent years produced two outstanding first-class players who have brought great honour to the village. They are Maurice Palmer, a brilliant scrum-half, who captained the Welsh

Dragons on their South African tour in 1956 and also gained his Oxford Blue in 1960 (teaming up with English international, Richard Sharp), and John Brock, who gained Welsh Youth International honours in 1956. A tremendous second-row forward John was a regular choice for Llanelli when only in his teens, and was destined for great things. But unfortunately a knee injury put him out of the game for some time.

TREFFGARNE CONSTRUCTION

CO. LTD.

BITUMINOUS MACADAM SUPPLIED TO
THE LLANGWM RUGBY CLUB

Bert Edwards

(Milford Haven) Ltd.

CAXTON BUILDINGS,
LOWER CHARLES STREET,
MILFORD HAVEN. Telephone: 2833

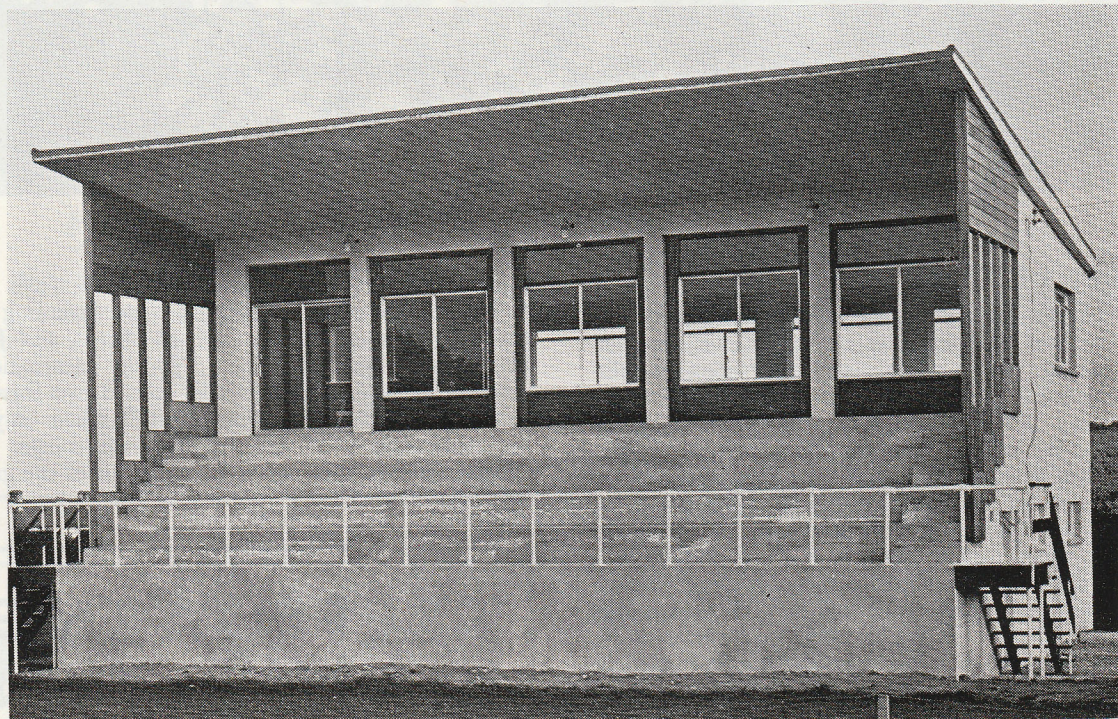
LETTERPRESS AND LITHOGRAPHIC
PRINTERS

Selwyn Morgan

BUTCHER
LLANGWM

EXTENDS BEST WISHES ON THE OPENING
OF THE NEW STAND AND WISHES THE CLUB
EVERY SUCCESS FOR THE FUTURE.

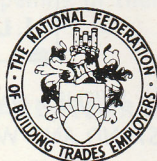
Progressive Clubs need Progressive Contractors



We are proud to have been Main Contractors to the Llangwm Rugby Club for the construction of their new Grandstand and changing rooms and wish the Club every success in the coming season.

WEST WALES CONSTRUCTION LIMITED

**BUILDING & CIVIL ENGINEERING CONTRACTORS to
LOCAL AUTHORITIES, INDUSTRIAL CONCERNS AND
PRIVATE DEVELOPERS THROUGHOUT WEST WALES.**



**THE BRIDGE, NARBERTH,
PEMBS.** :

NARBERTH 662/4

Another great player for Llangwm was Tony Kiff, a man with wonderful ability and a marvellous rugby brain. He was for many years a regular County choice at full-back and was a valuable member of Llangwm's cup-winning teams from 1958 onwards.

The club has now realised two ambitions in providing a first-class clubhouse, which was opened about four years ago by the late Ald. James John, and now the latest addition, a splendid new Stand. It will seat some 250 people, contains excellent changing quarters and showers, a refreshment room, and a training room, and is a fitting monument to the hard work put into the Club by officials, committee men, players and all connected with the game in this rugby-mad village.

CELEBRATION MATCH

The new Stand will be opened on September 7th by Mr. Osmonde John, the local W.R.U. representative—a man who has shown great interest in the welfare of the club, and who has been closely connected with the building of the new Stand. Following the ceremony, Llangwm will take the field in a celebration match against a County XV. The team will be led by this year's skipper Glynmor Howells, who although he started his career with neighbours Neyland, has served Llangwm well over the years. Appointed Second XV captain is Roderick England, a young full-back who shows great promise.

Apart from their success on the field Llangwm are fortunate in having a fine band of officials and com-



ELECTRICAL INSTALLATIONS
FOR THE NEW LLANGWM STAND
WAS CARRIED OUT BY

R. D. POWELL

**89 ROBERT STREET
MILFORD HAVEN**

Tel.: Milford Haven 2778

WHOLESALE TOBACCONISTS AND
CONFECTIONERS

F. C. Nicholas Ltd.

WHOLESALE STORES

**HILL STREET,
HAVERFORDWEST**

Telephone:
2968

Retail Dept. and
Hairdressing
4 Upper Market St.
Tel.: 3505

Of the Ladies Committee formed 20 years ago only seven of the original thirty remain:

Back row (left to right), Mrs. Emily Watkins, Mrs. May Pront, Mrs. Lily Jones, Miss Cynthia John.

Front row: Mrs. Myra Rees, Mrs. Blowden Gettings, Miss Iris Morgan.



mittee men not to forget a splendid Ladies Committee. For the last twenty years the same band of ladies turned out every Saturday to provide refreshments for the players and their loyalty deserves the highest praise.

Present Chairman, Eddie Hones has had a long

association with club both as a player and official.

A MAGNIFICENT RECORD

Secretary Tom Phillips is entering his fiftieth year in this office, a British record. A fine place kicker in his playing days, the work he has done



Goldsmiths

Silversmiths

Howells

(WEST WALES JEWELLERS) LTD.

TENBY

HAVERFORDWEST

Established 1866

for the club over the years has been tremendous and his enthusiasm for the game is running as high as ever. Treasurer, Glyn Morgan is another member who has given long service in this capacity, and as said before, Llangwm is fortunate in having many loyal servants who are always prepared to spare their time and energy for the good of what is a first-class Club.

PLAYERS:

Full Backs

TERRY HITCHINGS—A long serving player, he possesses a safe pair of hands and good boot. Team's place-kicker. Electrician.

RODERICK ENGLAND—This season's Second Fifteen captain, he is a promising player, who should develop into a capable full-back.

Wings

PETER REES—Nippy winger with a tenacious tackle. A real tearaway for his size. Plumber.

ADRIAN THOMAS—A strong, straight runner, who has scored many fine tries. Has played for County team, but unfortunately last season was dogged with injury. Bank Clerk.

GARY SLARKE—Teenager who had his first season in senior rugby last year. Stylish player who shows tremendous promise. Apprentice.

MICHAEL THORNBERRY—Another young player entering senior rugby. Determined runner who is improving all the time. Apprentice.

Centres

BARRY JONES—A regular choice at centre for a number of seasons. Solid and safe and a very good reader of the game, he is particularly strong in defence. Local Government Officer.

PHIL MORGAN—Joined club from neighbours Haverfordwest, last season. A fine player in youth rugby, he has proved himself as a very dependable centre.

Outside Half

BERT JONES—One of the finest outside halves produced by the Club, and a regular County choice. A complete footballer, and a fine tactician, he possesses a clean pair of hands, good boot and a strong burst that has brought him many tries, both at outside-half and centre. Teacher.

Scrum Halves

GEORGE THOMAS—Has been a marvellous servant to the Club over the years. Although not possessing a very long pass, he is probably the most consistent scrum-half in Pembrokeshire and it is a very rare occasion when he has a bad game.

Telephone:

HAVERFORDWEST 3212

George Davies & Son

(BUILDERS' MERCHANTS) LTD.

- PLUMBERS
- and
- BUILDERS' MERCHANTS

PRENDERGAST HILL

HAVERFORDWEST

FOR THE FINEST SELECTION OF
MENSWEAR

VISIT

W. C. JOHN

& SONS LTD.

CASTLE SQUARE,
HAVERFORDWEST

Telephone 2706

THE COUNTY'S LARGEST
MENSWEAR SPECIALISTS

NIGEL HADFIELD—A product of youth rugby, has shown himself to be a steady performer with plenty of courage and determination. Bricklayer.

Props

PHILIP WILLIAMS—Very strong and a keen weightlifter, his speed in the loose is a great asset. Baker.

MICHAEL ROBERTS—One of the finest young prospects in the County. Tremendously powerful in the loose, he should develop into a first-class forward. Student.

CONGRATULATIONS ON THE OPENING OF
THE NEW STAND AND BEST WISHES FOR
YOUR FUTURE SUCCESS

GEORGE MOODY

TURF ACCOUNTANT

HAVERFORDWEST

COMPLETE PLUMBING INSTALLATION

for the

SHOWERS AND
KITCHEN

at the

NEW LLANGWM
GRANDSTAND

was carried out by

B. W. GRIFFITHS

Plumbing and Heating Engineer

103 CITY ROAD, HAVERFORDWEST



Dilwyn Lewis receives the 1958-59 Pembrokeshire Championship Cup from the late Mr. Fred Phillips, W.R.U.

TED SINNETT—A loyal servant to the Club, who would never let the side down. Unfortunately has now left the area. G.P.O. Engineer.

Hooker

BRIAN JOHN—Another player who has contributed so much to rugby in Llangwm. A County player, he is regarded as one of the best hookers in West Wales. Great humourist, he is one of the 'characters' of the local game and is a tremendously popular figure. Local Government Officer.

SURGICAL AND MEDICAL
REQUIREMENTS

W. G. & J. A. HARRIES
LTD.

31 BRIDGE STREET

HAVERFORDWEST

BEAUTY PREPARATIONS
BABY FOODS

PERFUMES
TOILET REQUISITES

J. D. LLOYD & SONS LTD.

SPRING GARDENS
NARBERTH

YOU ORDER TODAY

BUILDERS AND PLUMBERS MERCHANTS

Head Office: South Road, Aberaron
Branches: Aberystwyth, Glynneath
Llandovery, Narberth, Neath and
Porthcawl.

WE DELIVER TOMORROW

Second Row

GERALD THOMAS—A strong and rugged forward. Has suffered with injury in the past, but will always give of his best.

STEWART WILLIAMS—Good in line-out, he is a mobile forward who is always prominent in the loose.

TONY PHILPIN—Solid and durable, is more than useful in the mauls. Place kicker. Representative.

Back Row

GLYNMOR HOWELLS—Long serving stalwart and this season's captain. Very fit and versatile, he covers a tremendous amount of ground in a game. Is nearing the end of a colourful career that has brought him many honours, including the unique record of having appeared in ten consecutive Knock-Out Cup Finals. Lorry driver.

ROY HARRIES—An aggressive open-side forward who has brought fear to many an outside-half. Has played many fine games during a long career with the club. Farmer.

MARLEY HUGHES—Son of Vice-Chairman, Meurig Hughes, he gave some outstanding performances at the outset of last season, but was then dogged with injury that severely restricted his playing for the rest of the year. Is a strong and mobile forward.

WITH EVERY GOOD WISH FOR THE SUCCESS
OF LLANGWM R.F.C. AND CONGRATULATIONS
ON THE OPENING OF THE NEW GRANDSTAND

SKYRME MAY

CENTRAL PHARMACY

NEW QUAY, CARDS.

Telephone . . . 294

ROGER LEWIS—Was introduced to the side last year and gave some capable displays. More should be heard of him in the future.

RODERICK JONES—Joined the club from Haverfordwest towards the end of the season. Fast and mobile, he should develop into a useful player.

KEN PLATTEN—Was formerly with Neyland, but since joining the club has proved himself to be a very useful utility player. Is eager to help the club and last year played at scrum-half, full-back and wing-forward. Plasterer.

(Continued on page 30)

THE COUNTY HOTEL

Near
Bus Station
and Railway

HAVERFORDWEST

FULLY LICENSED — FREE HOUSE

THIS IS AN IDEAL TOURIST CENTRE
Beautifully redecorated and must be
visited

Twenty Bedrooms — Hot and Cold
Water

Excellent Cuisine

COACH PARTIES CATERED FOR
Saloon, Smoke Room and Public Bars

New Superb Dining Room and
Cocktail Bar

Proprietors: J. & D. Grey Telephone: 3542

LLANGWM R.F.C. (Continued)**A GRANDSTAND FOR ALL TIME**

The stand is designed to seat 70-80 persons on ramped seating which commences 5 ft. above ground level and rises to the first floor accommodation which comprises a gymnasium/tea room 31 ft. x 18 ft., and a fully fitted kitchen 12 ft. x 8 ft.

At ground floor level are situated two changing rooms with showers; a referee's changing room with shower, toilets and a stove 12 ft. wide x 40 ft. long. This store sits directly under the ramped seating.

Construction

The ramped seating, frame, roof and cantilevered canopy are all constructed in reinforced concrete. The canopy has a cantilever of 15 ft., and the whole of the roof is covered with 3 layers, 3-ply felt with mineral finish. The infill wall panels between columns and beams are 10 ins. cavity walls with concrete block external skin and thermalite block inner skin. The walls are plastered internally and rendered externally with white Tyrolean finish.

The first floor is timber joisted between beams and covered with weyroc boarding and vinyl sheeting for flexibility when used as a gymnasium. The solid concrete ground floor to changing rooms etc. is quarry tiled covered.

The entire length of the tea room over looking the field is fully glazed in hardwood panels between columns, with built-in sliding aluminium windows.

All-weather Protection

Either end of the seating area is protected the full width and entire height to canopy with a hardwood frame with fixed glazing in clear georgian wired glass.

The reinforced concrete frame is at 8 ft. centres with a clear span of 18 ft. The columns are all 8 ins. square.

Main Contractors :

West Wales Construction Ltd.,
The Bridge, Narberth.

Architects :

Beaumont E. Minter, M.C.D., B.A.R.C.H.
(L'POOL), A.R.I.B.A., A.M.T.P.I.,
26a Hamilton Terrace,
Milford Haven.

"Everything for the Sportsman"

TOM'S Tel.: 3653
MARKET STREET SPORTS
HAVERFORDWEST
ALL LEADING SPORTS EQUIPMENT
Jerseys, Shorts, Footballs always in stock

CWMTILLERY R.F.C.

Cwmtillery can look back on last season with a great deal of pride. For the first time in their comparatively short history and in only their third attempt they won the coveted Mon. Junior Union Cyrus Davies Cup. Naturally they hope to repeat this performance this coming season but as has been the case after other successful series there is a possibility of losing players to more senior clubs. Nevertheless there is quite a large playing membership in the club and an enthusiastic committee. The fixture list contains over forty games, excluding cup games and it is being strengthened every year. The club's chairman Mr. D. Jones and the Vice-

Chairman Mr. N. Owen bring another distinction to the club whereby they have been elected executive member and selector respectively, of the Mon. Junior Union. The Ladies Committee is stronger than it has ever been and has been busy raising much needed funds during the close season. On the whole, as at the beginning of last season, it's largely a matter of 'wait and see' as far as prospects are concerned. Whatever the outcome the club has earned itself a place in the record books and will be eager to maintain a high reputation.



Cwmtillery R.F.C. Cyrus
Davies Cup winners, 1968.